

THIS DRAWING IS UNPUBLISHED. RELEASED FOR PUBLICATION  
 © COPYRIGHT - By - TE CONNECTIVITY ALL RIGHTS RESERVED.

REVISIONS					
P	LTR	DESCRIPTION	DATE	DWN	APVD
E		REMOVED THE RIB ON THE BASE TO CASE ECO-15000132015	04DEC2015	HYS	CHL
E1		NEW ADD PN ECO-17-004477	31Mar2017	YWQ	CHL

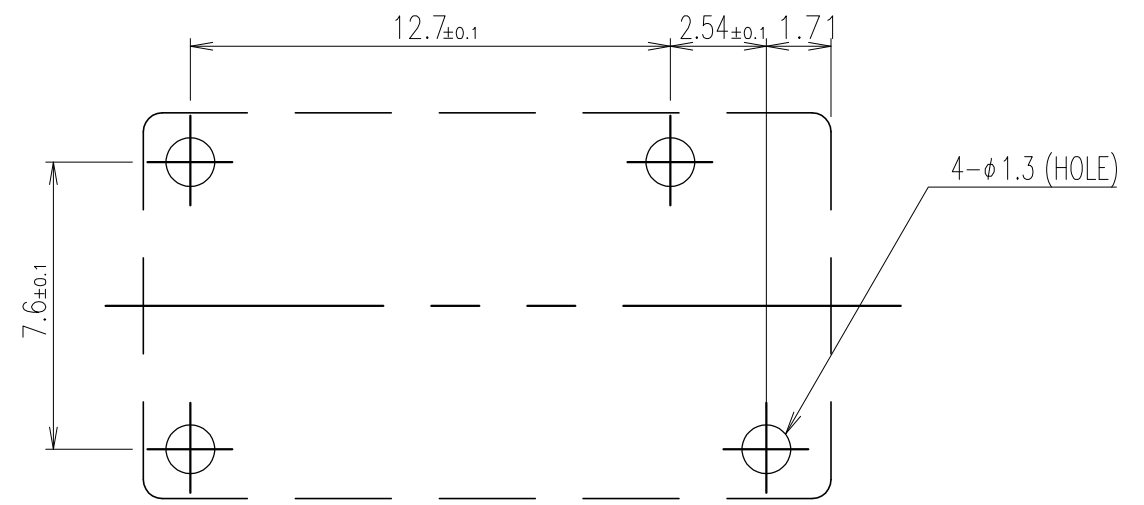
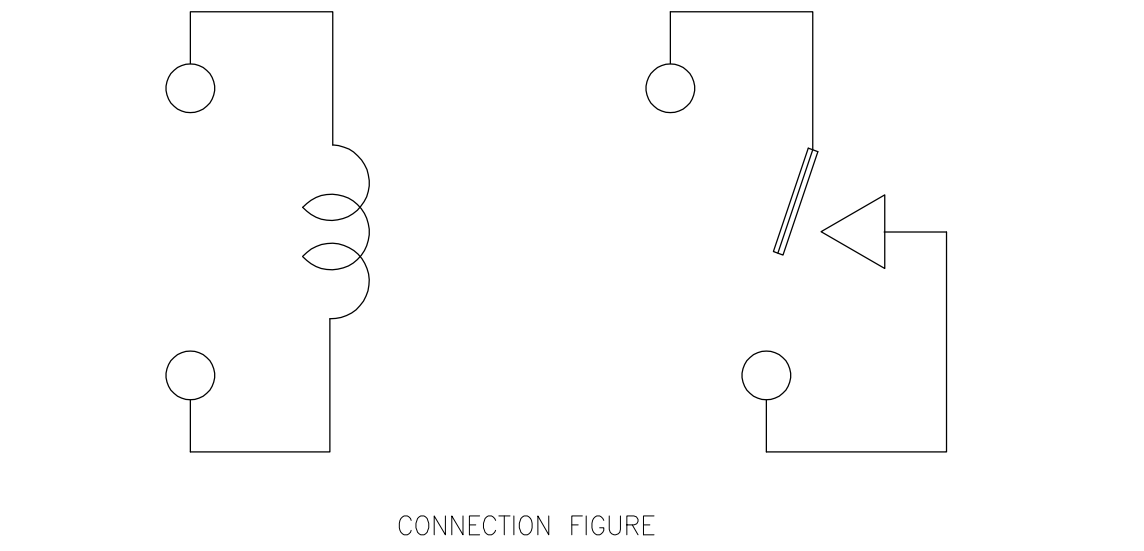
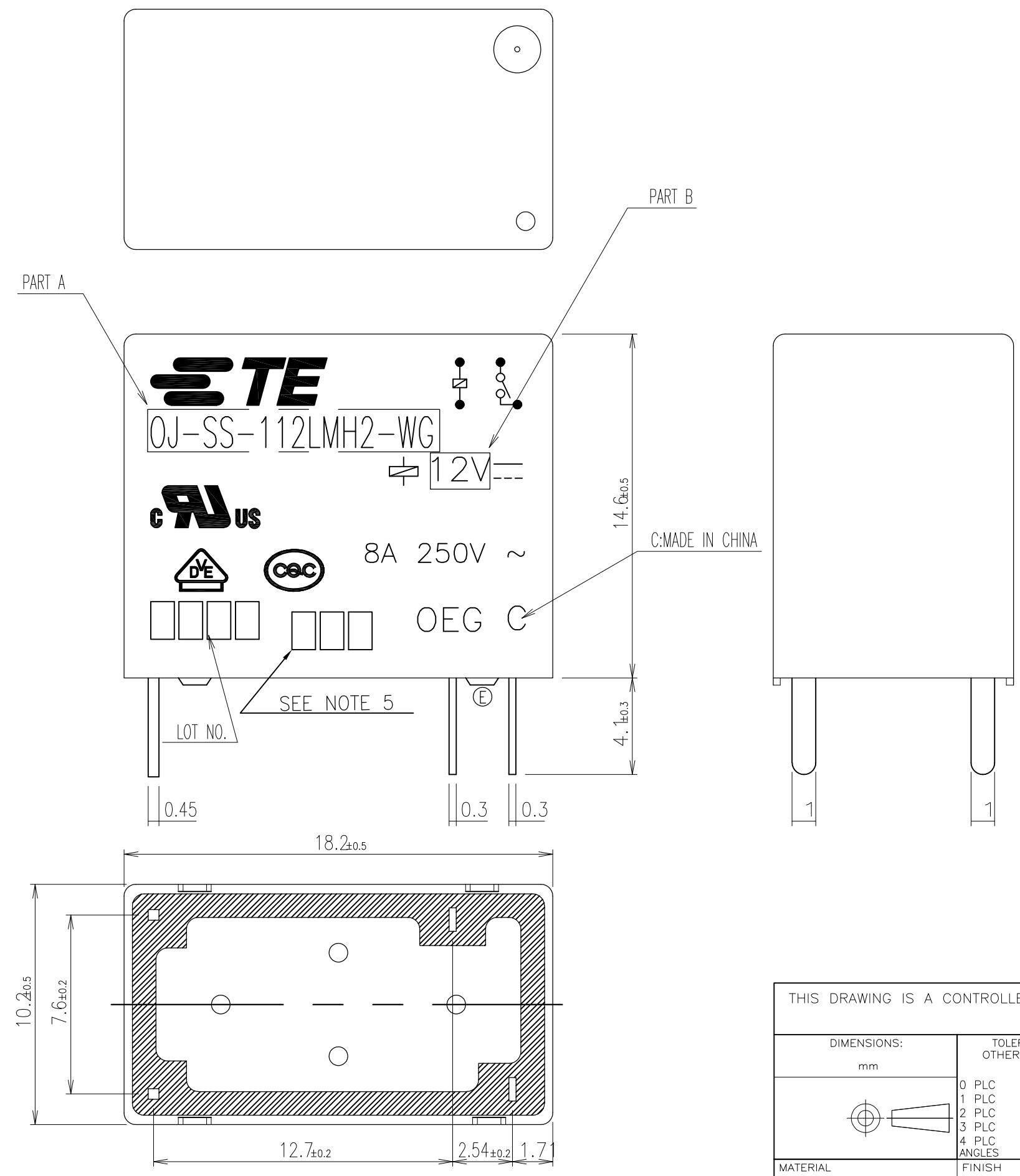


FIGURE FOR PRINTED CIRCUIT BOARD PROCESSING (BOTTOM VIEW)

THIS DRAWING IS A CONTROLLED DOCUMENT.		DWN	FU_BO	24AUG2012	<b>STE</b> TE Connectivity		
DIMENSIONS: mm		CHK	N_FUNAYAMA	-			
TOLERANCES UNLESS OTHERWISE SPECIFIED:		APVD	XIAONING_ZHANG	-	NAME		
0 PLC	± -	PRODUCT SPEC	-	OJ-SS-LMH2-WG SPEC,000			
1 PLC	± -	APPLICATION SPEC	-	-			
2 PLC	± -	SIZE	A3	CAGE CODE	00779	DRAWING NO	1721874
3 PLC	± -	WEIGHT	-	RESTRICTED TO		-	
4 PLC	± -	CUSTOMER DRAWING		SCALE	5:1	SHEET	1 OF 2
ANGLES	± -			REV	E1		
FINISH	-						

THIS DRAWING IS UNPUBLISHED.

RELEASED FOR PUBLICATION

© COPYRIGHT - By - TE CONNECTIVITY

ALL RIGHTS RESERVED.

REVISIONS

P	LTR	DESCRIPTION	DATE	DWN	APVD
-	-	SEE SHEET 1	-	-	-

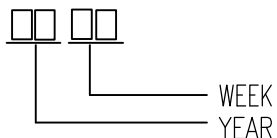
PACKAGE SPEC	TE PART NO	DESCRIPTION	PART B	PART A	TYPE
(E1) 107-84030	1721874-8	OJ-SS-124LMH2-WG	24V	OJ-SS-124LMH2-WG	h
107-79010	1721874-6	OJ-SS-124LMH2-WG	24V	OJ-SS-124LMH2-WG	f
	1721874-5	OJ-SS-112LMH2-WG	12V	OJ-SS-112LMH2-WG	e
	1721874-4	OJ-SS-109LMH2-WG	9V	OJ-SS-109LMH2-WG	d
	1721874-3	OJ-SS-106LMH2-WG	6V	OJ-SS-106LMH2-WG	c
	1721874-2	OJ-SS-105LMH2-WG	5V	OJ-SS-105LMH2-WG	b
	1721874-1	OJ-SS-103LMH2-WG	3V	OJ-SS-103LMH2-WG	a

Diagram dimension	Tolerance
0.99mm max.	±0.1mm
1 - 2.99mm	±0.2mm
3mm min.	±0.3mm

RELAY TYPE

NOTES:

- 1.TERMINAL DIMENSION BEFORE TINNING.
- 2.LOT NO. SYSTEM AS FOLLOWING:



- 2.TERMINAL DIMENSION IS BEFORE SOLDER DIP;
- 3.FOR THE TIN-PLATING OF THE PINS:  
+0.1mm FOR WIDTH, THICKNESS AND DIAMETER.  
+0.5mm FOR LENGTH.
- 4.MARKING FROM INK TO LASER AND USING WELDING CONTACT

5.ADD LOT NO. SYSTEM AS FOLLOWING;



- I, DIGITS FOR DAY OF THE WEEK  
1...MONDAY IN THIS WEEK;  
2...TUESDAY IN THIS WEEK;  
.....  
7...SUNDAY IN THIS WEEK
- II, DIGITS FOR SHIFT OF THE DAY  
1...DAY SHIFT IN THIS DAY;  
2...NIGHT SHIFT IN THIS DAY;
- III, ONE CHARACTER DISTINGUISH THE LINE IDENTITY, SUCH AS: A,B.....Z

		EPOXY RESIN	SEAL (BASE & BOBBIN)	15
		MW79	MAGNETIC WIRE	14
94V-0		NYLON	CASE	13
94V-0		P.E.T	BASE	12
94V-0		NYLON	BOBBIN	11
	SOLDER DIP	C.P WIRE	COIL TERMINAL	10
94V-0		P.P.S	CARD	9
		Ag ALLOY	MOVABLE CONTACT	8
		Ag ALLOY	NO.CONTACT	7
		STEEL	HINGE SPRING	6
	SOLDER DIP	Cu ALLOY	NO.TERMINAL	5
	SOLDER DIP	Cu ALLOY	MOVABLE SPRING	4
	NIP	STEEL	CORE	3
	NIP	STEEL	ARMATURE	2
	NIP	STEEL	YOKE	1
INCOMBUSTIBILITY	TREATMENT	MATERIAL	DESCRIPTION	ITEM

THIS DRAWING IS A CONTROLLED DOCUMENT.		DWN	FU.BO 24AUG2012	
DIMENSIONS: mm		CHK	N,FUNAYAMA	
TOLERANCES UNLESS OTHERWISE SPECIFIED:		APVD	XIAONING,ZHANG	
0 PLC ± -		PRODUCT SPEC	-	
1 PLC ± -		APPLICATION SPEC	-	
2 PLC ± -		WEIGHT	0	
3 PLC ± -		SIZE	A3	
4 PLC ± -		CAGE CODE	00779	
ANGLES ± -		DRAWING NO	C-1721874	
FINISH		RESTRICTED TO	-	
MATERIAL		CUSTOMER DRAWING		
-		SCALE	5:1	
		SHEET	2 OF 2	
		REV	E1	



OJ-SS-LMH2-WG SPEC,000