

MATERIALS AND FINISHES

BODY ZINC ALLOY
PLATED NICKEL

HOUSING POLYESTER BUTYLENE TEREPHTHALATE(WHITE)

CENTER CONTACT PHOSPHOR BRONZE
PLATED GOLD

INSULATOR TEFLON

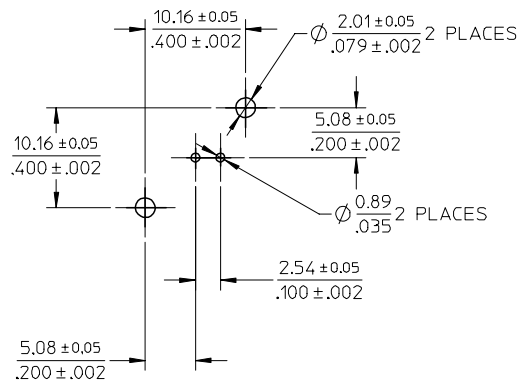
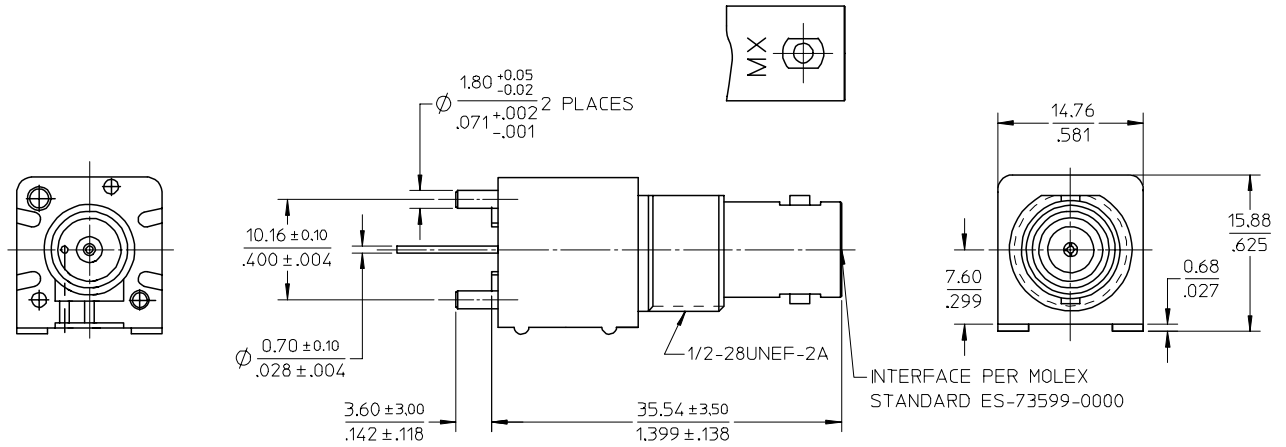
MOUNTING POST BRASS
PLATED TIN

SOLDER TAIL BRASS WIRE
PLATED TIN

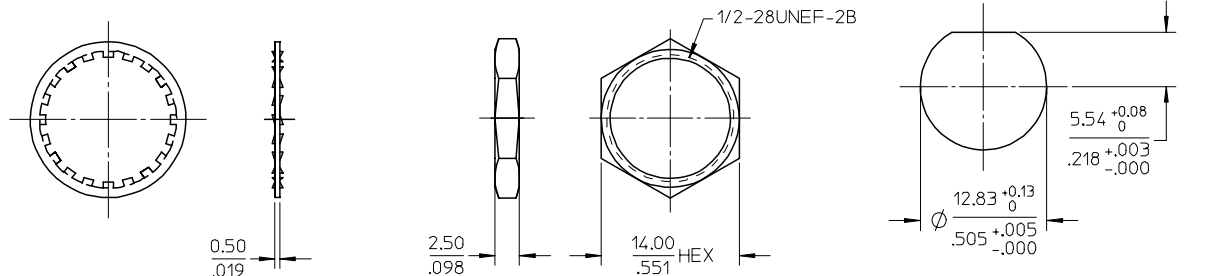
WASHER PHOSPHOR BRONZE
PLATED NICKEL

NUT BRASS
PLATED NICKEL

MECHANICAL & ELECTRICAL CHARACTERISTICS:
PER PRODUCT SPECIFICATION PS-73598-0060



PCB HOLE CONFIGURATION



RECOMMENDED MOUNTING HOLE
MAXIMUM PANEL THICKNESS:5.50MM
RECOMMENDED MOUNTING TORQUE
12 inch-pounds MAX.

ENTER DESCRIPTION EC NO: URF2005-0553 DRWN:CLLI CHKD: APPR:MHUANG	2005/06/28 2005/06/29 2005/06/29	QUALITY SYMBOLS ▽=0 ▽C=0	GENERAL TOLERANCES (UNLESS SPECIFIED)		DIMENSION STYLE	SCALE	DESIGN UNITS	THIRD ANGLE PROJECTION		
			mm	INCH	MM/IN	---	METRIC			
A	REV	DESCRIPTION	4 PLACES	± ---	± ---	DRAWN BY	DATE	TITLE BNC 75 OHM VERTICAL PCB RECEPTACLE BNC-J/PCB		
			3 PLACES	± ---	± ---	CLLI	2005/06/06			
			2 PLACES	± 0.13	± ---	CHECKED BY	DATE	MOLEX INCORPORATED		
			1 PLACE	± 0.25	± ---	PENNY	2005/06/06			
			ANGULAR ± 2 °			APPROVED BY	DATE	DOCUMENT NO. SD-73101-068		
			DRAFT WHERE APPLICABLE MUST REMAIN WITHIN DIMENSIONS			MISEN	2005/06/06			
						MATERIAL NO.	DATE	SHEET NO. 1 OF 1		
						73101-0680				
THIS DRAWING CONTAINS INFORMATION THAT IS PROPRIETARY TO MOLEX INCORPORATED AND SHOULD NOT BE USED WITHOUT WRITTEN PERMISSION										