

COMPONENTS / ACCESSORIES

SIDE PANELS AND FLANGES



Flange, 482.6 mm (19")



For Ripac EASY
Integrated mounting holes for installation of handles

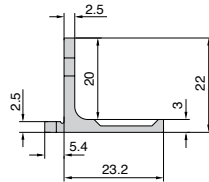
Material:
Extruded aluminum profiles

Surface finish:
Anodized

U	Packs of	Order No.
3	2	3634.745
6	2	3634.750

+ Accessories:

Handles for subracks,
see page 104



Handles



For subracks and component shelves

For fitting on the subrack flange with handle holes and on all component shelves.

Material:
Die-cast zinc

Surface finish:
Spray-finished, silver-grey

Supply includes:
Assembly parts.

For	Packs of	Order No.
Subracks 3 U and 4 U	2	3636.010
Component shelves		
Subracks 6 U and 7 U	2	3666.010

Trim section, rear



To fit all Ripac Vario, Ripac Vario EMC, Ripac Compact and Ripac Vario Mobile. Ensures 84 HP fit at the rear of the subrack. With integral channel to accommodate EMC gaskets.

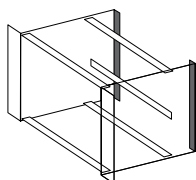
Material:
Extruded aluminum section

Surface finish:
Clear-chromated

U	Order No.	
	Packs of 1	Packs of 2
2	3684.633	–
3	3684.634	3685.276
4	3684.635	–
6	3684.636	3685.277
7	3684.637	–
9	3684.638	–
10	3684.639	–
11	3684.640	–

+ Accessories:

EMC gaskets, vertical,
see page 116



Ripac Vario

