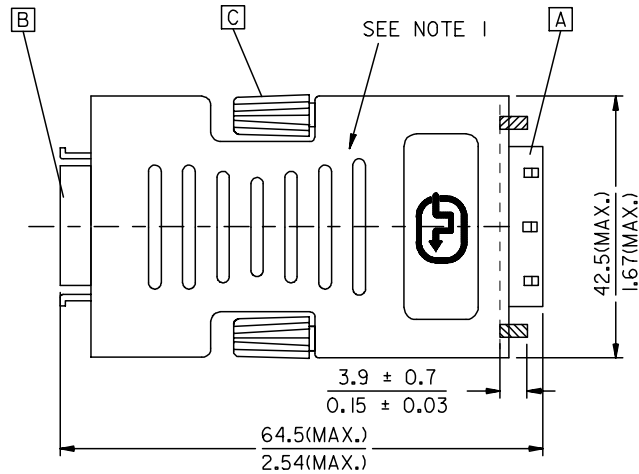
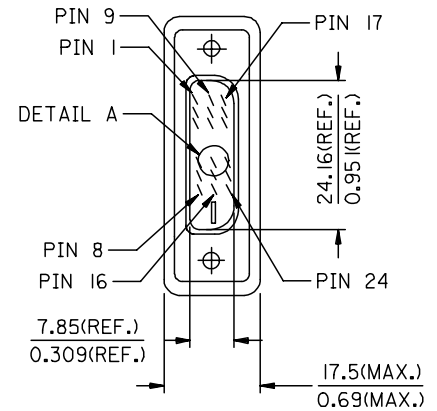


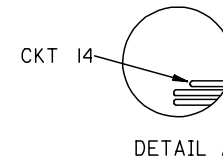
DFP(F)



BACK SIDE



DVI\_D(M)



DETAIL A

ENTER DESCRIPTION EC NO: DG2006-0186 DRWN:PDAI CHKD: APPR:TKAN	2006/03/09 2006/03/09 2006/03/10	QUALITY SYMBOLS ▽=0 ◻=0	GENERAL TOLERANCES (UNLESS SPECIFIED)		DIMENSION STYLE MM/IN		SCALE ---	DESIGN UNITS METRIC	THIRD ANGLE PROJECTION		
	DESCRIPTION		mm	INCH	DRAWN BY	DATE	TITLE				
	REV		4 PLACES	± ---	± ---	PDAI	2006/03/07	DVI_D(M)-DFP(F) ADAPTER			
			3 PLACES	± ---	± ---	CHECKED BY	DATE	MOLEX INCORPORATED			
	2 PLACES	± ---	± ---	ZXDENG	2006/03/07	MATERIAL NO.					
	1 PLACE	± ---	± ---	APPROVED BY	DATE	88741-8800		DOCUMENT NO.		SHEET NO.	
				BORON	2006/03/07	SD-88741-009				1 OF 2	
DRAFT WHERE APPLICABLE MUST REMAIN WITHIN DIMENSIONS			THIS DRAWING CONTAINS INFORMATION THAT IS PROPRIETARY TO MOLEX INCORPORATED AND SHOULD NOT BE USED WITHOUT WRITTEN PERMISSION								

NOTE:1. MOLD WITH SNOW WHITE PVC RESIN 887800077 FOR ADAPTOR COVER.

2. DVI CONNCETOR SPECIFICATION

2.1 REFER TO PRODUCT SPEC. PS74320-0001.

2.2 CONTACT PLATING: AU FLASH.

3. ELECTRICAL PERFORMANCE

3.1 INSULATION RESISANCE: 20M Ohms Min

3.2 DIELECTRIC STRENGTH: 300V DC FOR 10 MILLISECONDS.

4. ADAPTOR SPECIFICATION

4.1 REFER TO PRODUCT SPEC. PS88741-8800.

5. THIS PRODUCT MUST MEET MX RoHS COMPLIANCE.

6. CONNECTION DIAGRAM

SHIEDL	SHIELD	GROUND
PIN 6	PIN 24	TMDS CLOCK-
PIN 5	PIN 23	TMDS CLOCK+
PIN 4	PIN 22	TMDS CLOCK SHIELD
PIN 14	PIN 19	TMDS DATA 0 SHIELD
PIN 15	PIN 18	TMDS DATA 0+
PIN 16	PIN 17	TMDS DATA 0-
PIN 18	PIN 16	HOT PLUG DETECT
PIN 7	PIN 15	GROUND(+5V & HV SYNC.)
PIN 8	PIN 14	POWER +5V
PIN 3	PIN 11	TMDS DATA 1 SHIELD
PIN 1	PIN 10	TMDS DATA 1+
PIN 2	PIN 9	TMDS DATA 1-
PIN 19	PIN 7	DDC DATA
PIN 20	PIN 6	DDC CLOCK
PIN 13	PIN 3	TMDS DATA 2 SHIELD
PIN 11	PIN 2	TMDS DATA 2+
PIN 12	PIN 1	TMDS DATA 2-
DFP(F)	DVI_D	CABLE FUNCTION

7. MATERIAL LIST

ITEM	DESCRIPTION
D	DFP CONNECTOR FEMALE SCREW 887806063
C	SCREW (FOR COVER) 887806003
B	DFP FEMALE CONNECTOR 887899292
A	DVI_D SINGLE CHANNEL G/F CONNECTOR 743230001

ENTER DESCRIPTION EC NO: DG2006-0186 DRWN:PDAI 2006/03/09 CHKD: 2006/03/09 APPR:TKAN 2006/03/10 REV	QUALITY SYMBOLS ▽=0 ▽=0	GENERAL TOLERANCES (UNLESS SPECIFIED)		DIMENSION STYLE	SCALE	DESIGN UNITS	THIRD ANGLE PROJECTION	
				MM/IN	---	METRIC		
		4 PLACES	± ---	± ---	DRAWN BY	DATE	TITLE	
		3 PLACES	± ---	± ---	PDAI	2006/03/07	DVI_D(M)-DFP(F) ADAPTER	
2 PLACES	± ---	± ---	CHECKED BY	DATE				
1 PLACE	± ---	± ---	ZXDENG	2006/03/07				
ANGULAR ± ---°		APPROVED BY		DATE				
		BORON		2006/03/07	MOLEX INCORPORATED			
DRAFT WHERE APPLICABLE MUST REMAIN WITHIN DIMENSIONS		MATERIAL NO.		DOCUMENT NO.	SHEET NO.			
		88741-8800		SD-88741-009	2 OF 2			
		SIZE		THIS DRAWING CONTAINS INFORMATION THAT IS PROPRIETARY TO MOLEX INCORPORATED AND SHOULD NOT BE USED WITHOUT WRITTEN PERMISSION				
		A 4						